

2056 Cortell St.
N. Vancouver, BC

Main Level: 1194 sq. ft.
Upper Level: 823 sq. ft.
Lower Level: 659 sq. ft.
Total: 2676 sq. ft.

Other Areas:

Garage: 532 sq. ft.
Decks: 522 sq. ft.

Gavin Hughes Daniella Williamson

Two Award Winning Realtors - One Exceptional Level Of Service

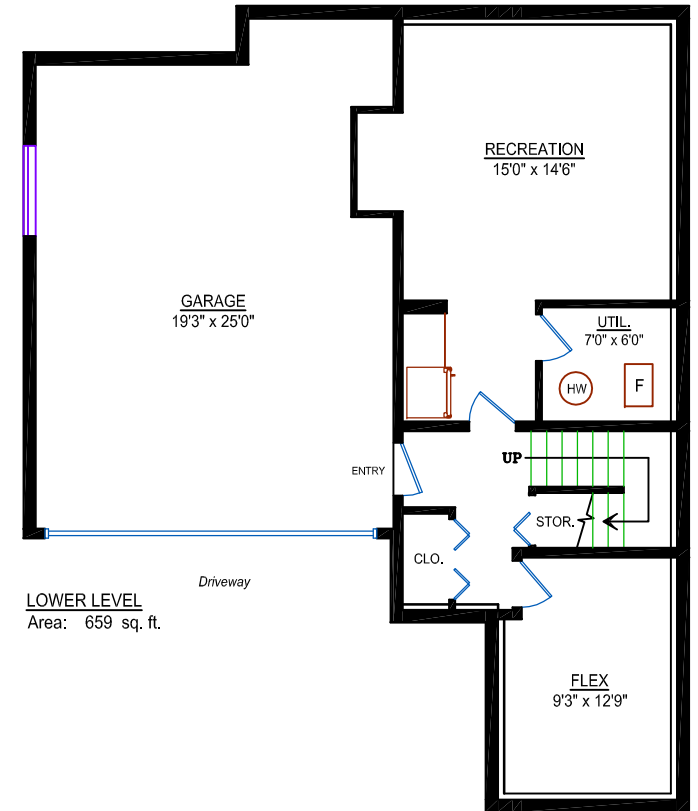
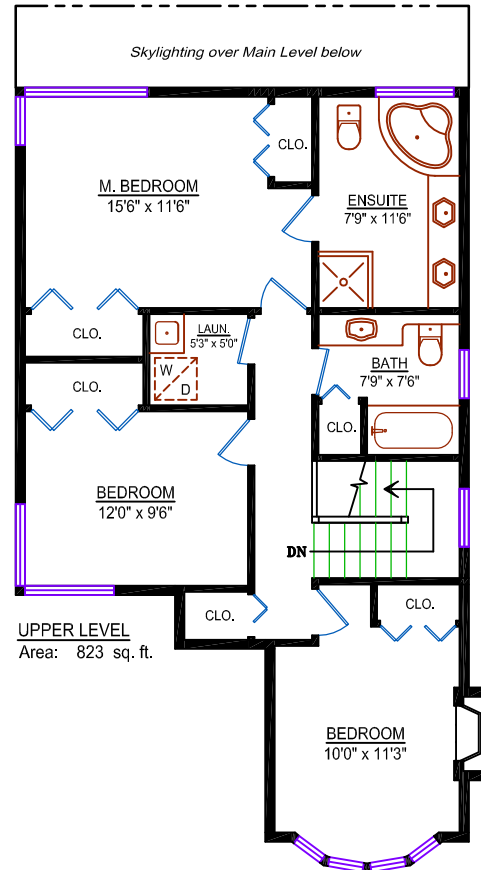
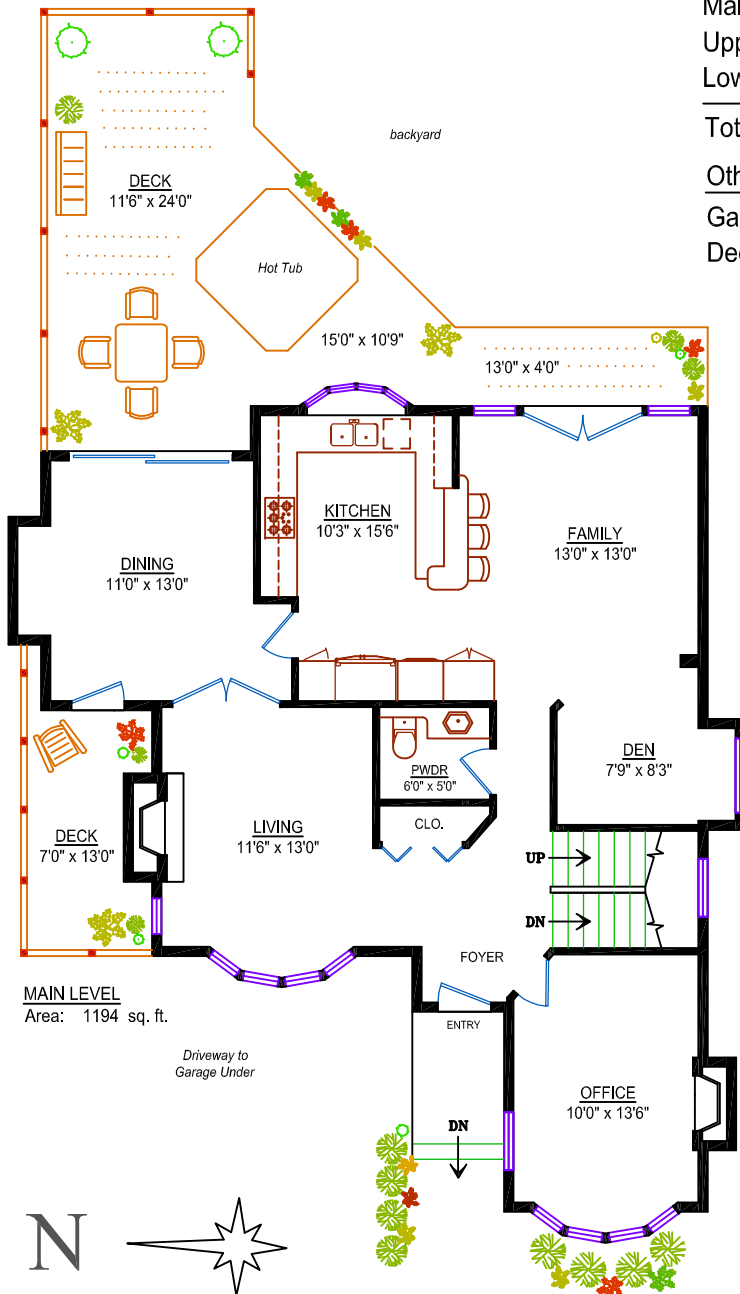


604.984.9711

daniella@daniellawilliamson.com

gavin@gavinhughes.ca

www.pembertonheightsrealestate.com



Design Ideas 4u

604-862-5914
* room dimensions are approximate *
* sq. ft. measurements are not guaranteed *